



Isle of Wight
Council

Schools and Education Attainment Support Panel

February 2024

Naomi Carter – Service Director – Education, Inclusion and Access

Dean Prodomo – Service Manager – Education and Post 16

Purpose and Agenda

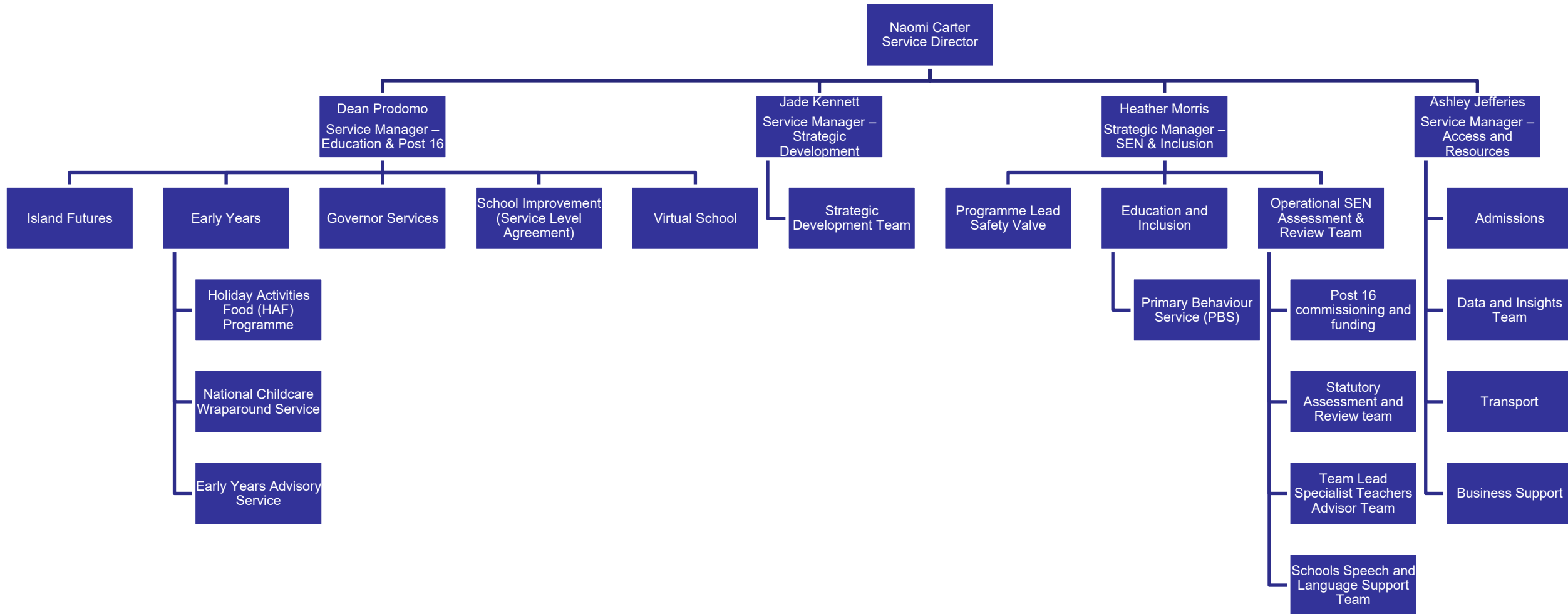
Purpose

- For sharing information so members are more informed and understand the work of the new department and the current priorities of the department.

Agenda

- Organisation of new department
- Key priorities
- SLA
- Educational landscape
- Leadership update
- Ofsted update
- Attainment
- Attendance
- Safety Valve

Organisational Chart Education, Inclusion & Access



Children's Services - Key Priorities

Education, Inclusion and Access

- Education outcomes
- SEND Sufficiency, Safety Valve, Inspection preparation
- School place planning & financial stability of schools

Children's Social Care

- Action plan resulting from Youth Justice Service inspection
- Action plan resulting from children's services inspection
- Corporate parenting

Service Level Agreements (SLAs)

Education

- School Improvement Service
- Hampshire and Isle of Wight Educational Psychology
- Governor Services

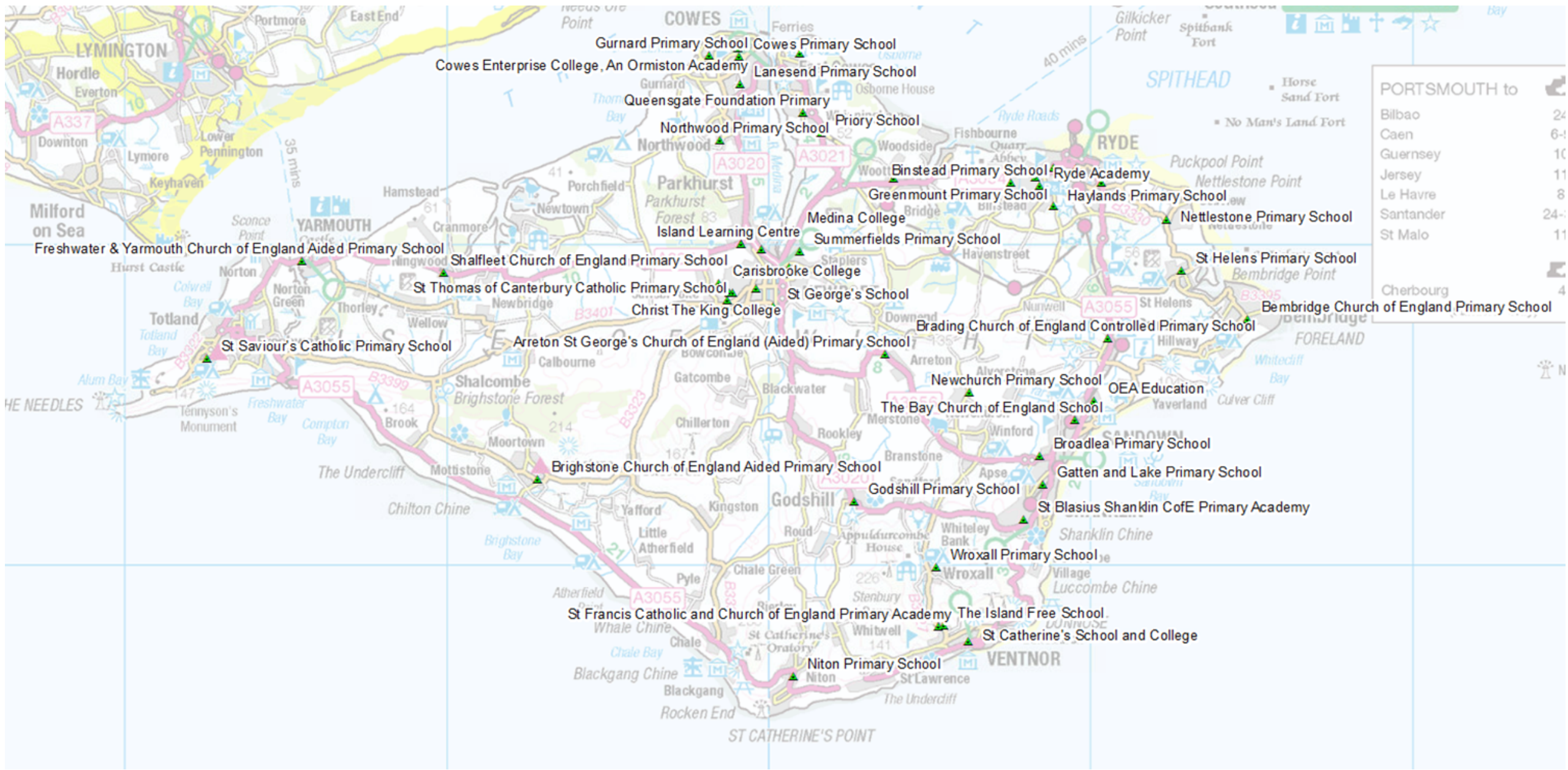
Social Care

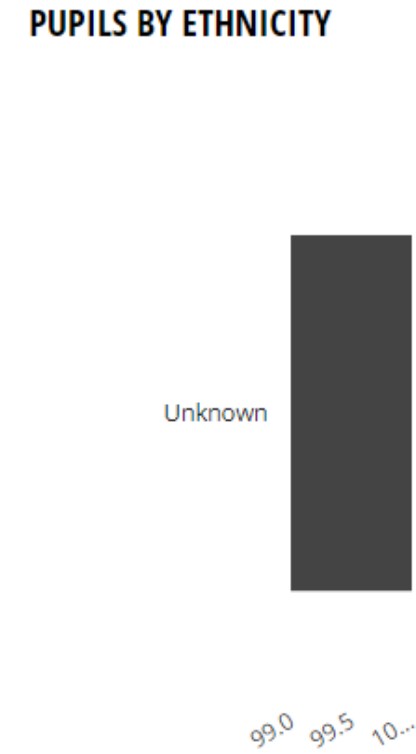
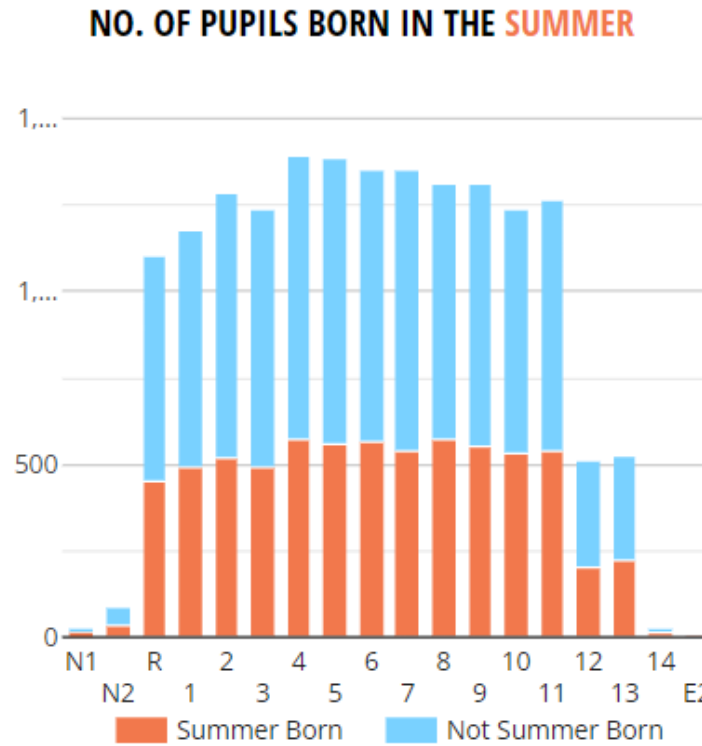
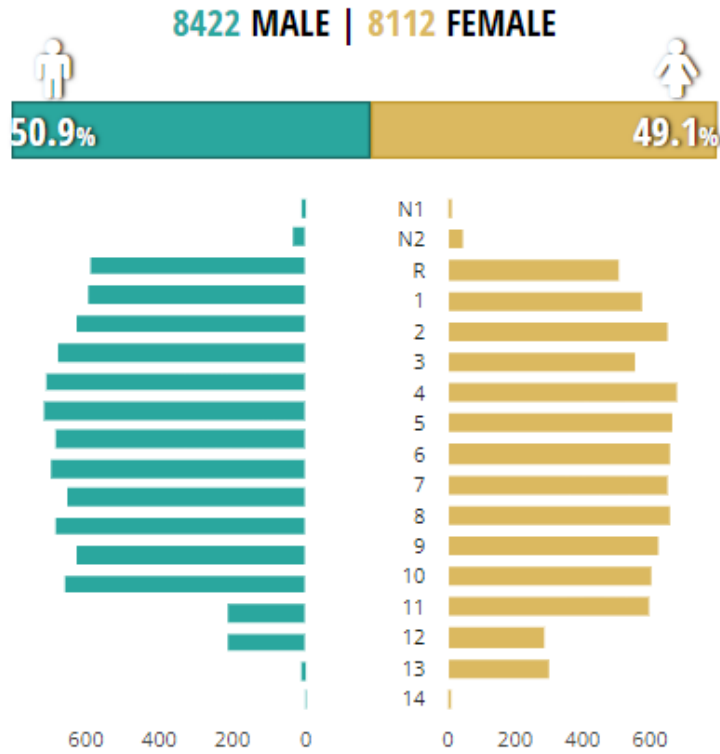
- Childrens Reception Team
- Multi Agency Safeguarding Hub
- Childrens Enquiry Team
- Local Authority Designated Officer
- Out of Hours
- Refugee Services
- Learning and Development

What does this mean?

- HIAS will continue with the LLP process – the annual QA process for schools
- HIAS will continue with CPD offer to schools, including SENCo networks, specific school support
- IOW Education, Inclusion and Access will run headteacher and deputy headteacher networks

Isle of Wight educational landscape





24.2% †† of pupils are eligible for **FREE SCHOOL MEALS**

4.6% of pupils have **EAL** (ENGLISH AS AN ADDITIONAL LANGUAGE)

LAST ACADEMIC YEAR THERE WAS **91.8% ATTENDANCE**

5.7% Authorised absence (297,235)
2.5% Unauthorised absence (132,130)

SEN PUPILS

Key SEN Type	No. of pupils	% of pupils
Non SEN	13073	79.1%
Education, Health and Care Plan	1009	6.1%
SEN Support	2452	14.8%

Autumn census return

Isle of Wight educational landscape

- 52 educational establishments (not including nursery provision)
- 47 Primary, Secondary and Special inc PRU)
- 1 college
- 2 independent schools
- 2 independent special schools
- Catholic schools – 4
- CofE schools – 11
- Mixed denomination – 2
- 6 Federations (Governance Process)

Setting	Academy/ Free School	Maintained	Independent/ non- maintained	TOTAL
College			1	1
Primary Schools	4 (1 - CofE) (1 - CofE & C)	33 (9 – CofE) (4 – Catholic)		37
Secondary Schools	3 (1 – CofE/C)	3		6
AI through		1 (CofE)	2	3
Special Schools		2 (1 Primary) (1 Secondary)	2 (one KS3 only) (one upper KS2 to sixth form)	4
Education Centre (Pupil Referral Unit)		1		1
TOTAL	7	40	5	52

Isle of Wight educational landscape

- 52 educational establishments (not including nursery provision)
- 47 Primary, Secondary and Special inc PRU)
- 1 college
- 2 independent schools
- 2 independent special schools
- Catholic schools – 4
- CofE schools – 11
- Mixed denomination – 2
- 6 Federations (Governance Process)

Setting	Academy/ Free School	Maintained	Independent/ non- maintained	TOTAL
College			1	1
Primary Schools	4 (1 - CofE) (1 - CofE & C)	33 (9 – CofE) (4 – Catholic)		37
Secondary Schools	3 (1 – CofE/C)	3		6
AI through		1 (CofE)	2	3
Special Schools		2 (1 Primary) (1 Secondary)	2 (one KS3 only) (one upper KS2 to sixth form)	4
Education Centre (Pupil Referral Unit)		1		1
TOTAL	7	40	5	52

Leadership updates

Leadership

- St Saviours – Maggie Sanderson (interim executive head)
- ILC – Chris Toner (interim)
- Greenmount – Rebecca day (executive head)
- Wroxall – Carrie Drake (acting)

Recruitment processes

- Holy Cross
- St Saviours
- Wroxall

General notes on recruitment

- Using our own - Executive Headteachers
- Attracting high quality candidates
- Growing our own
- Leadership development opportunities
- High quality leadership professional development
 - Aspiring leaders
 - Developing current leaders

Ofsted updates

Recent Inspection

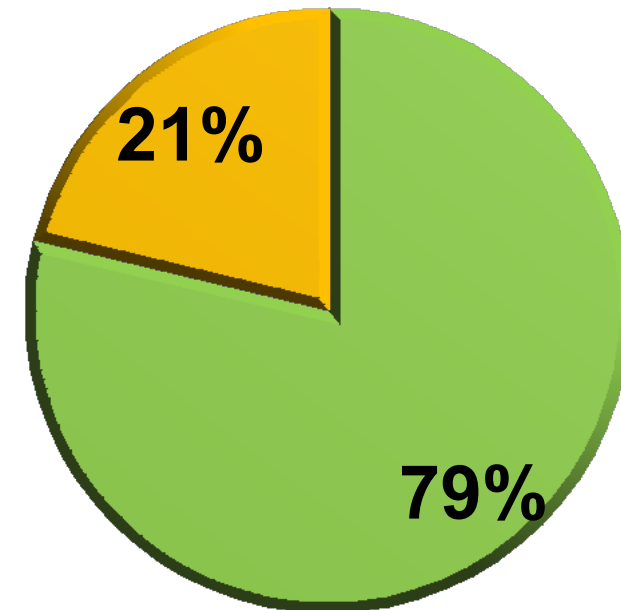
- Northwood – (not published)
- Brighstone - (not published)
- Godshill – **Good** from RI
- Christ the King – (not published)

Ofsted Updates

- January saw a pause in inspections as Ofsted Inspectors undertook additional training on mental health
- New guidance around pausing an inspection and recognise and responding to signs of distress of school leaders
- Introduction of 'The Big Listen'

IOW SCHOOLS OFSTED OUTCOMES

■ Good ■ Outstanding ■ RI ■ Inadequate



Ofsted update

Observations from School Ofsted analysis

- Still a need to focus on curriculum and teaching
- A need for middle/subject leader development
- Along with challenge by middle leaders and from governors

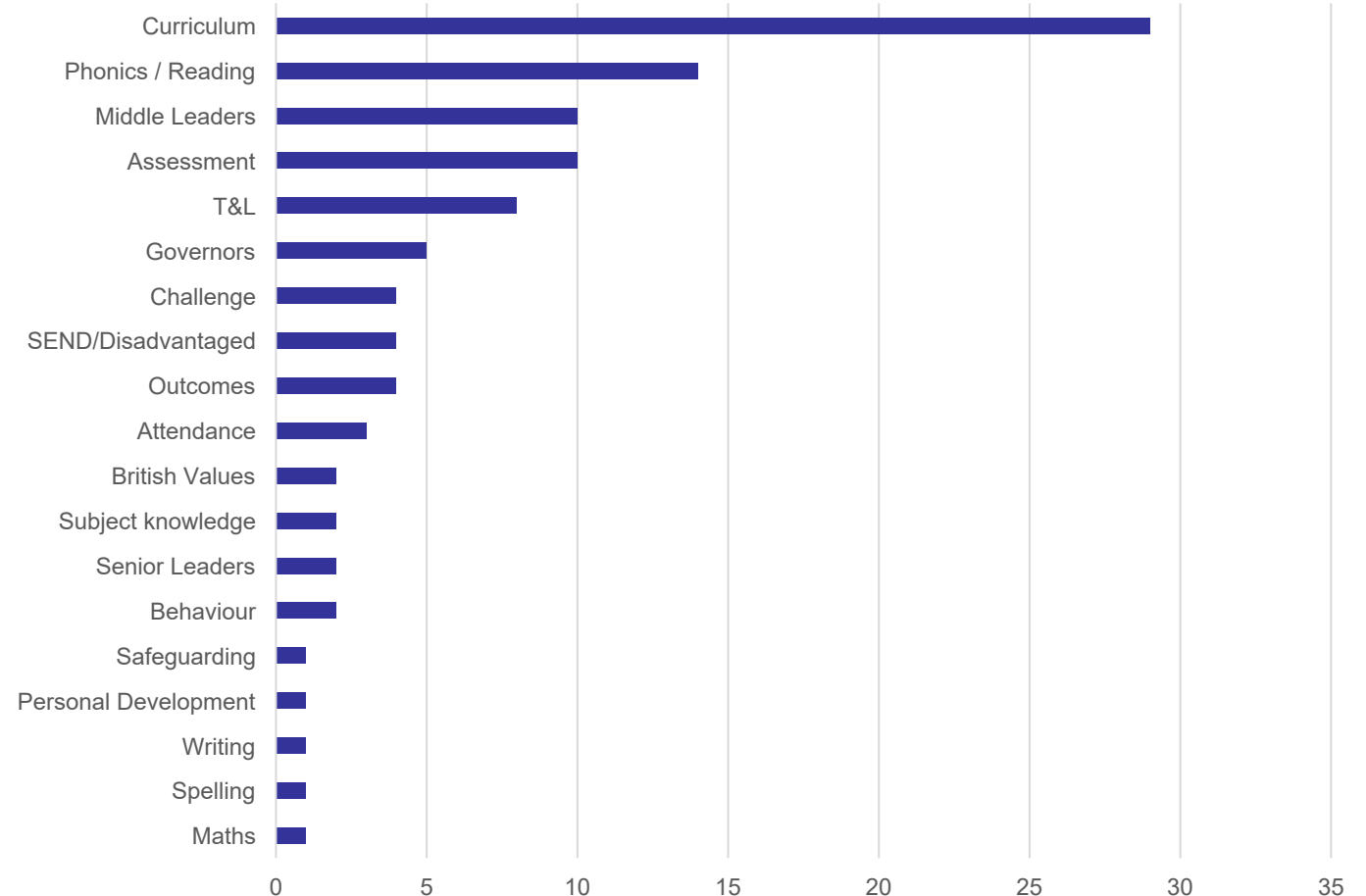
Interestingly no mentions of Early Years?

Behaviour was mentioned twice (once at ILC)

Interestingly outcomes only mentioned in 4 actions



Ofsted recommendations for school across the IOW



Ofsted updates

Good schools in the Ofsted inspection window

- Binstead Primary
- Medina House
- Dover Park Primary
- Newchurch Primary
- Shalfleet Primary
- Summerfields Primary
- Nettlestone Primary
- St Saviour's Catholic

Primary

- Wootton Community Primary School
- Barton Primary School
- Queensgate Foundation Primary
- Gurnard Primary
- Bembridge C of E Primary

Requires Improvement schools due an inspection

- Medina College
- Arreton St Georges
- Hunnyhill Primary
- St Mary's RC Primary
- Lanesend Primary
- Wroxall

• `

Ofsted update

Coroner's report

7. Ruth's employer, Reading Borough Council, clearly felt that Ofsted's decision was wrong and unfair, but did not provide any comment on the draft report, despite asking for the opportunity to do so.

Concerns

1. Reading Borough Council indicated an intention to adopt a much more robust and proactive approach to dealing with Ofsted, particularly where there are concerns about an inspection. This is not in written policy or guidance – which may go some way towards reassuring school leaders that their employer 'has their back' – both now and in future years.
2. Reading Borough Council also did not carry out any form of internal review. I was not made aware of any policy setting out when such an internal review should take place.
3. We heard in evidence that school leaders have received correspondence from Reading Borough Council about what mental health support options are available. I am concerned to know whether there is now written policy or guidance about communicating this, so that this continues to happen in future years.

IOW Children's Services Department will produce guidance on support around Ofsted and our role as a Local Authority



Attainment

Phonics Working At Expected Standard	2023		2022	
	Yr 1	Yr 2	Yr 1	Yr 2
Isle of Wight	74.8%	64.3%	62.6%	30.8%
National	78.9%	58.8%	75.5%	44.1%
Diff.	-4.1	+5.5	-12.9	-13.3

KS2 RWM – EXS+	2023	2023 Reading	2023 Writing	2023 Maths	2022
Isle of Wight	52% (5% increase on previous year)	69% (+1% on previous year)	64% (+6% on previous year)	67% (+5% on previous year)	47%
England (all state schools)	59% (1% increase on previous year)	73% (-1% on previous year)	71% (+2% on previous year)	73% (+2% on previous year)	58%
Diff.	-7%	-4%	-7%	-6%	-11%

KS4 2023 outcomes

	Progress 8			5+ En/Ma			4+ En/Ma		
	2023	2019	Diff	2023	2019	Diff	2023	2019	Diff
Isle of Wight	-0.24	-0.34	+0.10	36.2%	33.8%	+2.4%	58%	56%	+2%
National	-0.03	-0.03	0	45%	43.4	+1.6%	65%	64%	-1%

- Improvements in all areas.
- In all measures the IOW is increasing and faster than national.

Attainment

September Guarantee RPA Offers (Source: CCIS DfE Jan 2024)

	*2023	2022	2021	2020	2019
IOW	98.5%	98.3%	98.2%	94.7%	98.3%
National	94.6%	94.5%	95.5%	94.3%	95.0%
SE	92.8%	92.8%	93.2%	90.9%	93.8%

**provisional data*

16-18 Education, Employment and Training (Source: LA Tables DfE Dec 2023)

	2023	2022	2021	2020	2019
IOW	96.80%	96.20%	96.90%	93.10%	97.40%
National	93.90%	94.00%	94.70%	93.70%	93.90%
SE	91.90%	92.00%	93.60%	92.40%	92.70%

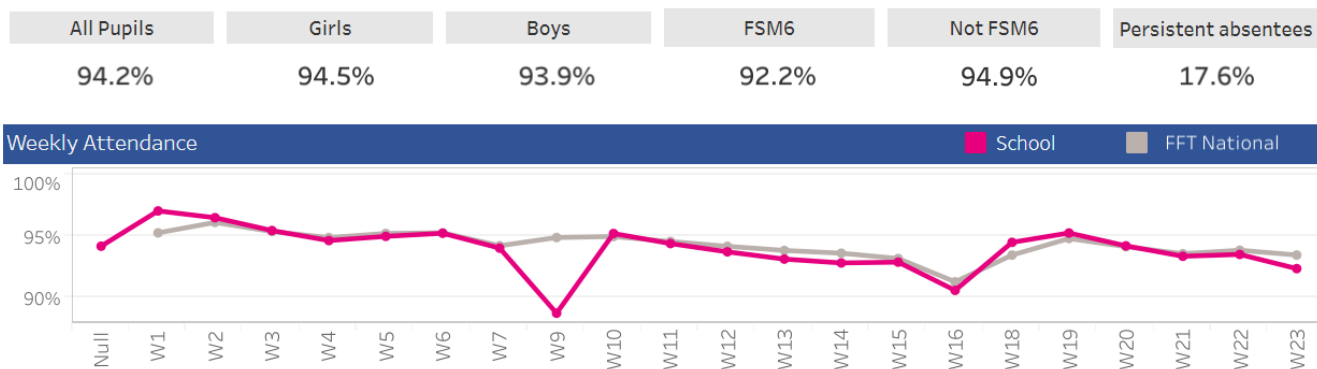
IOW Yr12 Course Level Breakdown (Source: CCIS DfE Nov 2023)

	2023	2022	2021	2020	2019
Level 3 A levels	48.00%	48.00%	50.00%	47.00%	53.00%
Level 3 Technical	12.00%	16.00%	19.00%	14.00%	13.00%
Level 2 GCSE	1.00%	0.00%	1.00%	8.00%	0.00%
Level 2 Technical	19.00%	18.00%	14.00%	14.00%	16.00%
Level 1 Technical	9.00%	5.00%	10.00%	12.00%	9.00%
Other Education	11.00%	13.00%	6.00%	5.00%	10.00%

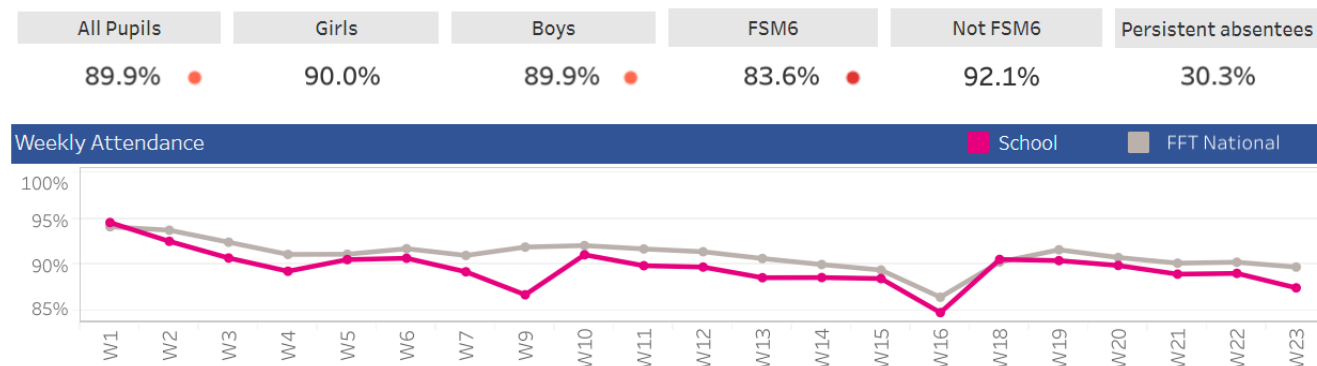
- IOW above national for September Guarantee
- IOW above national in 16-18 in education, employment and training

Attendance

Primary YTD: IoW 94.2%, National 94.3%



Secondary YTD: IoW 89.9%, National 91.1%



This data is taken from FFT and is indicative only, it may be subject to change. Data is correct as of 09 February 2024

	IoW		National	
	Primary	Secondary	Primary	Secondary
All pupils	94.2%	89.9%	94.3%	91.1%
Persistent Absence	18%	30%	17%	26%
Female	94.5%	90.0%	94.5%	90.8%
Male	93.9%	89.9%	94.1%	91.4%
FSM6	92.2%	83.6%	91.8%	85.8%
Not FSM6	94.9%	92.1%	95.2%	93.1%
SENK	92.5%	86.9%	92.4%	86.0%
EHCP	88.2%	85.2%	89.2%	82.7%

This data is taken from FFT and is indicative only, it may be subject to change.

Data is correct as of 09 February 2024

*Green indicates IoW is in line with or above national average
Red indicates IoW is below national average*

Safety Valve – School Facing Workstreams

- Established Jan 2023, organised around three sub-programmes.
- It aims to provide resources and support to better meet the SEND needs of the children and young people in our education settings.

Right Support, Right Time

The right support at the right time to meet need effectively.

Scope: Early identification and intervention to meet need at the earlier stages of the SEND pathway.

Improve Outcomes, Control Costs

Maximising strengths based, person centred approaches to achieve improved outcomes for children and young people with an EHCP and control high needs costs.

Scope: When an EHCP is in place.

Continuous Improvement

Improve LA performance against SEND statutory obligations and quality of EHCPs / Annual Reviews and track the delivery of other transformation activity.

Scope: Performance against statutory obligations and improvement activity.

Resources were launched in September 2023. They are designed to provide additional support to help meet the needs of **ALL** children and young people in the classroom and, apart from the deployment of SEN Advisers, the resources are free to access.

Safety Valve - School Facing Offers



Current offers available to schools, which are fully funded...

- Our **Primary Behaviour Service** has been launched!
- Our **IOW SEN Support Toolkit**: [Isle of Wight SEN Support Toolkit : Home \(hants.gov.uk\)](https://www.hants.gov.uk/SEN-support-toolkit)
- Our **SEN Support Phone Line**: [SEN Support Line Enquiry Form \(office.com\)](https://www.hants.gov.uk/SEN-support-phone-line)
- All **Transforming SEND Conference** resources can be found here: [SEN Moodle: All courses \(hants.gov.uk\)](https://www.hants.gov.uk/SEN-moodle)
- **SEN Matters** was sent out to all IOW schools: [SEN Moodle: All courses \(hants.gov.uk\)](https://www.hants.gov.uk/SEN-moodle)
- All **e-learning modules** can be found here: [SEN Moodle: All courses \(hants.gov.uk\)](https://www.hants.gov.uk/SEN-moodle)
- Our **VSEND Tool** has been launched with associated training

Offers available, which are chargeable...

- To book a **SEN Advisor**, email : SENAdvisorBooking@hants.gov.uk

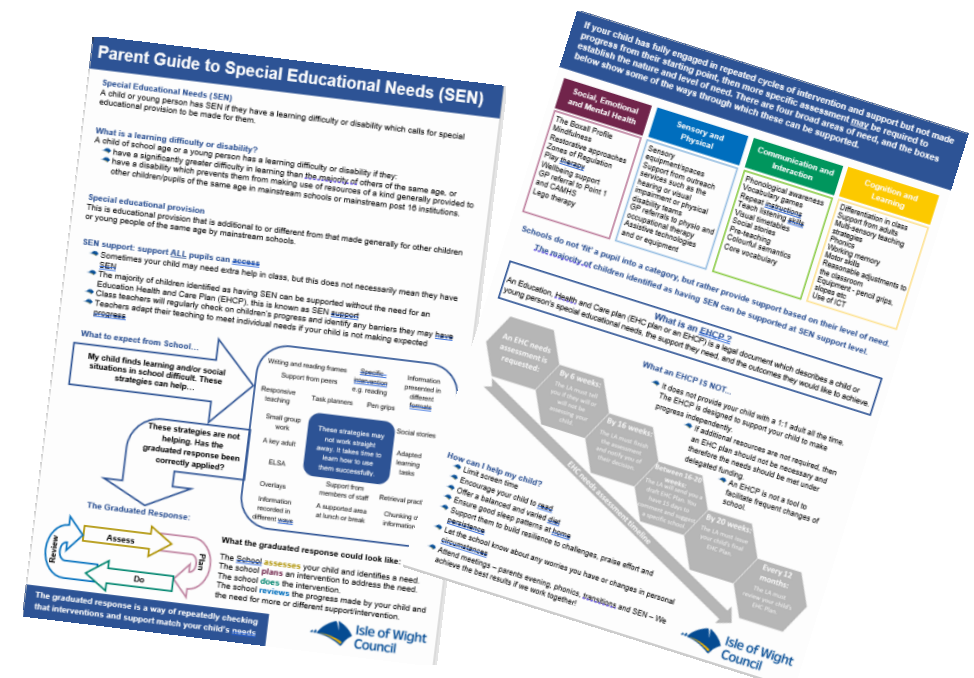
Safety Valve - School Facing Offers

New resources, which will be fully funded...

- Our IOW Parent/Carer Guide to SEN coming soon!
- Our IOW SEN Support/Ordinarily Available Provision (OAP) we will be working on in the next 12/18 months
- Update out SEN Strategy in the next 12 months
- Update out SEN Sufficiency Strategy in the next 12 months

Other work to support schools and children

- Increase specialist places available on the Island
- Review SEN place funding
- Realigned SENCO Networks to align with VSEND tool
- Review how we organise Resourced Provisions
- Setting up online Resourced Provision networks for teachers in charge/SENCo



Safety Valve – School Facing Workstreams

“Di was excellent! Our conversation over the phone was really productive in terms of pinpointing areas to focus on with the child we discussed and helping me clarify what to work on with him next. She then followed up with an email with helpful resources, links and a summary of our discussion. I would certainly use this service again.”

“Absolutely brilliant support from Marie. I was very unsure how to proceed with a medical/epilepsy related issue and she helped signpost me and offer guidance. Thanks ever so much!”

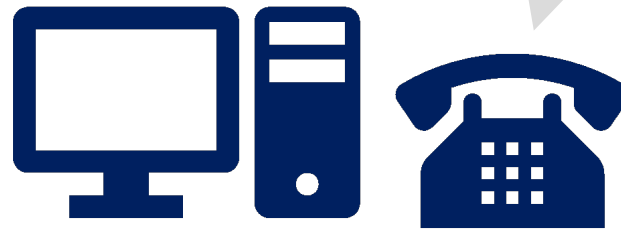
“Excellent service, many thanks - Marie was very helpful”

“Fantastic support! As a fairly new SENCO, it's so useful to have this level of support over the phone as it's a very isolating role. I will definitely be using the service frequently. Thanks Dean!”

“Thank you, Lisa. The follow up email you sent was incredibly helpful, as was the phone call.”

“Super speedy response and great advice, many thanks, love the new service.”

“As always, fantastic support line! Great advice and some guidance given to ensure I am doing the right thing in the event of a staff member being hurt by a child. Thank you SEN team!”



Safety Valve – School Facing Workstreams

The screenshot shows the 'learninghub' interface for 'Transforming SEND'. The top navigation bar includes 'Home', 'My Learning', 'My Dashboard', 'My Team', 'Find Learning', and 'Reports'. The main content area features a large image of hands playing with wooden blocks, with a blue overlay containing the text 'Transforming SEND'. Below the image is a row of six blue tiles, each representing a different resource: 'Learning modules', 'SEN support toolkit', 'SEN support line', 'Transforming SEND conferences', 'SEN Matters', and 'Parents Guide to SEN'. A yellow footer bar contains contact information for support.

ISLE of WIGHT COUNCIL

Home My Learning My Dashboard My Team Find Learning Reports learninghub

Dashboard / Transforming SEND

Transforming SEND

Select the tiles below to access learning, information and resources.

Learning modules SEN support toolkit SEN support line Transforming SEND conferences SEN Matters Parents Guide to SEN

For support contact:
learning.development@iow.gov.uk
01983 817280

- With the partnership coming to an end. We have developed an IOW portal to host all the resources on and are in the process of migrating them over.
- This will ensure we have control over the resources and are not reliant upon Hampshire.
- There are aspects that we will need to continue such as SEN Support phone line

Future School & Education Attainment Panel

Date and Time of Meeting	Notes
26 February 2024, 2pm	Presentation from you/Dean to be presented in the meeting.
1 July 2024, 2pm	<p>Possible future agenda</p> <ul style="list-style-type: none">➤ Update on Education, Inclusion and Access department➤ Update on Schools➤ Update on Ofsted➤ Update on Leadership➤ Update on Safety Valve implementation

Recap

Purpose

- For sharing information so members are more informed and understand the work of the new department and the current priorities of the department.

Agenda

- Organisation of new department
- Key priorities
- SLA
- Educational landscape
- Leadership update
- Ofsted update
- Attainment
- Attendance
- Safety Valve



**Isle of Wight
Council**